



Statement of Qualifications

2014

WWW.GC-ENVIRONMENTAL.COM

CAPABILITES STATEMENT

Introduction

GC Environmental, Inc.

† , Reno, Nevada 8950 | Washoe County
T: (775)

www.GC-Environmental.com

Company Background

GC Environmental, Inc., (GCE) is pleased to present this Cultural Resource Management Statement of Qualifications for your review and consideration. We pride ourselves in providing the highest quality engineering, environmental, cultural resources management and energy conversion for a wide variety of clients throughout the United States and the world.

GCE's technical staff has extensive and diversified experience ranging of general and highly specialized design and construction level services with the Principals of the firm have been involved in the industry for over 40 years. Our professional staff is comprised of civil, mechanical and electrical engineers/designers, geologists, geotechnical engineers, hydrogeologists, environmental assessors, field technicians, and archaeologists with a wide range of experience.

GCE has been performing environmental, geotechnical engineering and construction management services since 1979, is a California corporation founded in 1991, maintains a Class C Contractors license (#709413), certified small business by the State of California Office of Small and by FAR. With offices in Anaheim, California; Reno, Nevada; and Portland, Oregon, GCE professionals have extensive experience in managing complex environmental problems and providing creative, flexible and cost-effective solutions for our clients across the Country and many parts of the World.

Key members of GCE's professional staff are highly experienced in dealing with local, state and federal regulatory agencies, and negotiating on behalf of our clients. Our professional staff is ideally suited to provide a broad range of services and offer the following benefits:

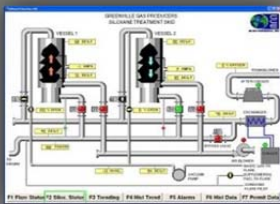
- ◆ Seasoned senior staff with specialized experience
- ◆ Past performance and proven ability to meet clients' needs

- ◆ Capability to perform work in a timely and cost-effective manner
- ◆ Commitment of top management
- ◆ Efficient project organizational structure

Clients in need of specialized engineering services frequently request "turnkey" services that take a project from the conceptual design phase through permitting, construction, and operations. Advantages of "turnkey" capabilities enables our clients to maintain a consistency in services provided, the ability to better control project completion time frames and, most importantly, the ability to negotiate a single contract rather than several different contracts for the same project. GCE provides this full range of turnkey design / build / operate capabilities to clients throughout the US and globally. GCE has provided engineering and/or construction management services for some of the largest, smallest, and most technically challenging sites in the nation and internationally.

Company Designations

BLM NV Cultural Use Permit (CUP) #N-72782
Nevada Antiquities Permit #641
Nevada State Museum Curation Agreement
BLM CA Cultural Use Permit (CUP) CA-14-17
San Bernardino County Museum Curation Agreement
BLM UT Cultural Use Permit (CUP) 14UT85109
BROWZ ID 2E5BC
Class C Contractors license (#709413)
FIN: 33-0484382
CA ID: 388-7067-1
OR ID: 0803488-8
NV ID: 324142
DUNS: 78-7944636
Cage: 4HNE3
SAM Status: Active, No Exclusions
BROWZ 2E5BC



CAPABILITES

Cultural Resource Management



GC Environmental, Inc. (GCE) is pleased to present our cultural resource management resources department. Our staff has provided environmental consulting in Nevada, California, Oregon, Utah and Arizona with combined experience over 45 years. Our seasoned staff includes of archaeologists, ethnographers, paleontologists, planners, GIS analysis, archaeological field crews, providing environmental analysis and recommendations under BLM NV Cultural Use Permit (CUP) #N-72782, Nevada Antiquities Permit #641 and Nevada State Museum agreement for curation services.

The professional staff have prepared hundreds of environmental and planning reports, recommendations and studies that comply with environmental regulations including the National Environmental Policy Act (NEPA), California Environmental Quality Act (CEQA), National Register of Historic Places (NRHP), Native American Graves Protection Act, Section 106 compliance, Archaeological Resources Protection Act (ARPA), Historic American Buildings Survey (HABS), Historic American Engineering Record (HAER), and Native American Tribal Consultation.

Cultural Resources Services include:

- Literature search
- Field Survey
- New site/isolate recordation
- Site Monitoring
- Safety/Work interruption Contingency Plan
- Preservation and Treatment plans
- Draft and Final Report Preparation
- Quality Control Plan
- Site testing/evaluations
- Construction monitoring and mitigation

Our GIS personnel are proficient in utilizing ESRI GIS software used for mapping and analyzing data. Our staff has a strong background in cultural resources and biology which allow our GIS staff to interface effectively with project managers, crew chiefs and provide insight into real time data analysis, and develop maps that provide meaningful results. We collect spatial data to complete professional grade site maps and area of potential effect (APE) of our project. Upon completion of a project we provide shape files in accordance with BLM standards. An important approach to our outreach in the community is keeping close relationships with academic professionals. We have an intern program that uses advanced study UNR students from the Anthropology Department, provides students with hands on professional experience and keeps us involved with current research technology.

We understand demanding schedules and our staff are accustomed to mobilizing on short notice, working under rigorous conditions, and delivering on demanding schedules. We have a great reputation with jurisdictional agencies because we maintain constant communication throughout the project; documents are easily readable, and technically credible.

Key Contacts

Reno

Dean Stanphill, PE - President
Cell: 775-560-3911
dstanphill@gc-environmental.com

Cultural Resource Management

Lori Bigham - CRM Program Manager
lbigham@gc-environmental.com
Cell: 775-544-3870

Paul Sanchez M.A. – Senior Principal Investigator
psanchez@gc-environmental.com
Cell: 775-741-9801

Gregg Harmon – Principal Investigator
gharmon@gc-environmental.com
Cell: 804-247-3338



Offices

1230 N. Jefferson Street, Suite J
Anaheim, CA 92807

T: (714) 632-9969 | F: (714) 632-9968

107 SE Washington Street, Suite 243
Portland, Oregon 97214

T: (503) 234-7984 | F: (503) 231-6485

520 Edison Way
Reno, Nevada 89502

T: (775) 209-1056